

National School Breakfast Week 2025

ACTIVITY  
GUIDE

# Pawsitively Puzzling

Use the clues to crack the case! Match each cat and dog detective to their name and age, paying close attention to who's next to who and their unique traits. Can you solve the puzzle and uncover the lineup?

## Your Clues:



The cat with the glasses is 4 years old.

George doesn't have anything in his hands.

Edward the dog is to the left of Arthur the dog.

Henry is 6 years old.

The dog with the monocle is 5 years old.

Trixie the cat is next to the oldest dog.

The youngest cat is 2 years old.

One of the dogs is 3 years old.



## The Detectives:



What are our names?

\_\_\_\_\_

What are our ages?

\_\_\_\_\_

# Mystery Match-Up

Can you talk like a hard-boiled detective? Match each word from the word bank to its correct definition and master the lingo of detectives and crime fighters.

## Word Bank

Alibi	Interrogate	Stakeout	Witness
Surveillance	Whodunit	Motive	Suspect
Evidence	Cipher	Red Herring	Case File

## Definitions

- \_\_\_\_\_ A person thought to be involved in committing a crime.
- \_\_\_\_\_ A person who saw an event or crime take place and can provide details.
- \_\_\_\_\_ A device used to encrypt or decode secret messages.
- \_\_\_\_\_ A false lead meant to misdirect or confuse the investigation.
- \_\_\_\_\_ The reason someone would commit a crime.
- \_\_\_\_\_ To question someone intensely, usually to extract information.
- \_\_\_\_\_ A crime story or mystery that is centered on identifying the criminal.
- \_\_\_\_\_ The process of secretly watching someone to gather information, often done by spies or detectives.
- \_\_\_\_\_ Information or objects that prove a point in a mystery or investigation.
- \_\_\_\_\_ An excuse or explanation that proves someone was not involved in a crime.
- \_\_\_\_\_ A careful watch of a location or individual for extended periods of time.
- \_\_\_\_\_ A detailed record containing information and evidence about an investigation.





# Dot to Dot Detective

Follow the numbered dots in order, connecting each one with a line. As you complete the puzzle, a mysterious picture will be revealed. Once the image is complete, unleash your creativity and color it in to add your own touch!



What's a detective's favorite type of footwear?

**Sneakers!**

You're hilarious!



# The Breakfast Crossword Caper

Search through the puzzle to find and circle each word hidden within the grid. Once you've found all the words, you've cracked the case!

H P U D E T E C T I V E H Y X  
U C N A A T C E V I D E N C E  
U U U Y F E J K S L E U T H C  
A Q Q U L Q S M Y S T E R Y W  
N P U Z Z L E A H H U S N J A  
I D W X L H M E G G S E Z J T  
J C J A P W S U S P E C T S S  
J C O M S S P Y N C M R T B O  
O C A K P A N C A K E E C M N  
Q O T A N C I P Z K E T L U S  
E T M E H M C E R E A L U F L  
L O E V W A F F L E U I E F P  
E A A M O H O L M E S H S I E  
C S L F J I D B B C A S E N T  
A T I S M O O T H I E N Q Z G

## Word Bank

Cereal  
Pancake  
Muffin  
Oatmeal  
Waffle  
Eggs  
Toast  
Smoothie  
Clue  
Mystery  
Evidence  
Case  
Spy  
Watson  
Holmes  
Secret  
Sleuth  
Puzzle  
Detective  
Suspect

# Crack the Color Code!



Put your detective skills to the test and crack this color-coded code. Make sure to follow the steps carefully to reveal the mystery word!

## How to Crack the Code:

1. Cross out all the letters in blue.
2. Cross out all the letters in pink.
3. Cross out all the letters in green.
4. Unscramble the remaining letters to reveal the hidden word!

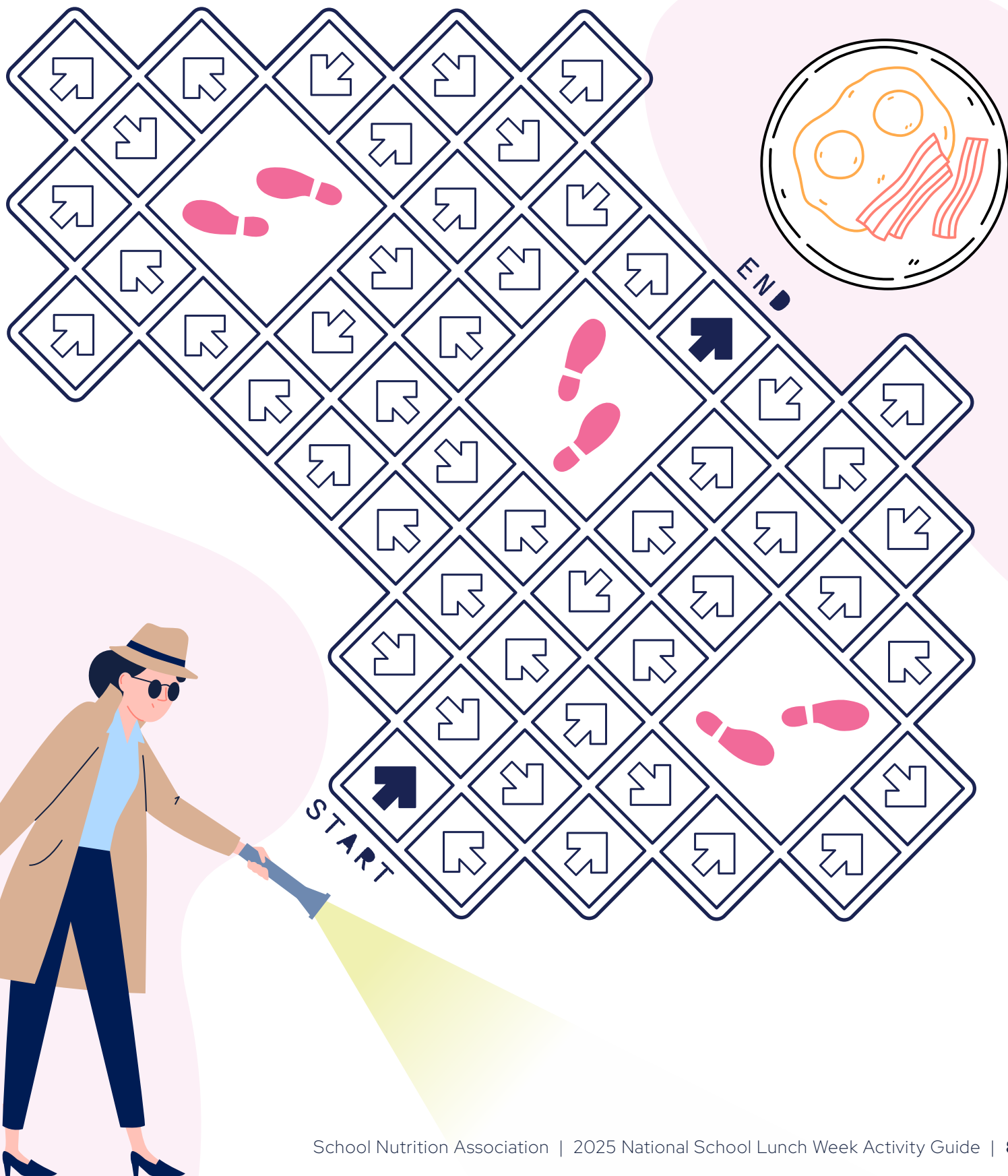


The secret  
word is...

---

## Mission: Morning Meal

Detective Drew is on a mission to track down her missing school breakfast! Help her navigate the maze, choosing the correct paths and following the clues to uncover the delicious meal waiting at the end. Will you solve the case and make the discovery?





# Fingerprint Forensics

A crime has been committed, and it's up to you to solve it! Throughout this activity guide, there are hidden fingerprints left behind by the culprit.

Your task is to carefully search through the pages and find these prints. Once you've found them, compare them to the suspect fingerprints we've got on file. The matching print reveals the identity of the culprit!

## Fingerprints to Search For:



Nancy



Charlie



Irene



Philip



Luther

And the  
culprit  
is...

---



# Answer Key

## Pg. 2

The Detectives:



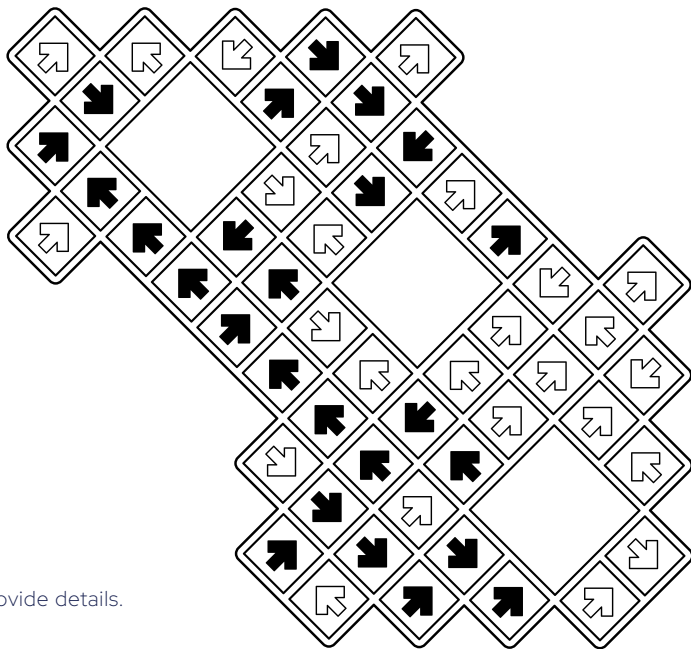
What are our names?

Edward Arthur Trixie Henry George

What are our ages?

5 years 3 years 4 years 6 years 2 years

## Pg. 8



## Pg. 3

Suspect	A person thought to be involved in committing a crime.
Witness	A person who saw an event or crime take place and can provide details.
Cipher	A device used to encrypt or decode secret messages.
Red Herring	A false lead meant to misdirect or confuse the investigation.
Motive	The reason someone would commit a crime.
Interrogate	To question someone intensely, usually to extract information.
Whodunit	A crime story or mystery that is centered on identifying the criminal.
Stakeout	The process of secretly watching someone to gather information.
Evidence	Information or objects that prove a point in a mystery or investigation.
Alibi	An excuse or explanation that proves someone was not involved in a crime.
Surveillance	A careful watch of a location or individual for extended periods of time.
Case File	A detailed record containing information and evidence about an investigation.

## Pg. 6

H P U D E T E C T I V E H Y X  
 U C N A A T C E V I D E N C E  
 U U U Y F E J K S L E U T H C  
 A Q Q U L Q S M Y S T E R Y W  
 N P U Z Z L E A H H U S N J A  
 I D W X L H M E G G S E Z J T  
 J C J A P W S U S P E C T S S  
 J C O M S S P Y N C M R T B O  
 O C A K P A N C A K E E C M N  
 Q O T A N C I P Z K E T L U S  
 E T M E H M C E R E A L U F L  
 L O E V W A F F L E U I E F P  
 E A A M O H O L M E S H S I E  
 C S L F J I D B B C A S E N T  
 A T I S M O O T H I E N Q Z G

## Pg. 7

The secret word is... Breakfast

## Pg. 9

The culprit is... Irene